



SUPREME line plus und ECO line plus
Safety cabinets in modern design



Type G90
Type G30

Safe storage of
pressurised gas cylinders



Welcome to DÜPERTHAL, Welcome to the Original!

As a leading German quality and technology enterprise, we set the standards when it comes to designing system solutions for process-optimised storage of chemicals and hazardous materials. All of our products and solutions are tailored specifically to meet your requirements. Aside from maximum safety, they offer the highest levels of effectiveness and efficiency – even in situations where there is no risk of fire. We are therefore providing you, as the customer, with reassurance. This is what we, as a family-run company, stand for. The original is what we stand for.



Safeguarding your values –

Since 1973, and into the future

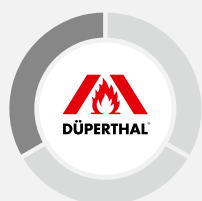
For more than forty years, we have been setting standards in our industry. As our customer, you benefit from our technological and commercial know-how: expertise that has been demonstrated in numerous reference projects for renowned international organisations. We constantly raise the bar, continuing to enhance our safety solutions so that we can help safeguard your values, also in the future.



Delivering the perfect system solution –

Customised designs, if needed, TÜV-certified prior to installation.

In addition to standard products of exceptional quality, we are the only company on the market to also offer customised, TÜV-certified system solutions that do not require acceptance on delivery. From consultation to components, installation and routine maintenance – we always strive to offer the best possible added value from the perspective of technical safety and operational management.



Helping you stay one step ahead –

With service and personal communication

By choosing a DÜPERTHAL solution, you are also gaining a strong, proactive partner. Our aim is to always stay one step ahead. All our products and solutions exceed the requirements laid down by certification programmes. The same applies to our work with you. We openly discuss challenges and propose improvements, helping you to always identify the ideal solution.

Our commitment For your safety



The indoor storage of pressurised gas cylinders in working environments in accordance with TRGS 510 regulations requires comprehensive safety precautions. Under the influence of heat, the gases contained expand and, in cases of fire, can present a serious risk of explosion. The safety cabinets for pressurised gas cylinders from DÜPERTHAL offer you 30 or 90 minutes of fire resistance and numerous additional features to ensure safe and convenient working.

| | |
|---|----|
| » Outstanding quality | 6 |
| » Maximum fire resistance – Type G90 and G30..... | 7 |
| » Individual solutions | 8 |
| » SURPREME line plus and ECO line plus | 9 |
| » All-round service | 10 |
| » Wide colour range | 11 |
| » Safety and functionality | 12 |
| » SUPREME line plus – Type G90 | 14 |
| » ECO line plus – Type G30 | 18 |
| » Optional extras for added safety | 26 |
| » Gas cylinder depots | 34 |
| » Gas cylinder containers | 35 |
| » Gas cylinder boxes / pallets | 36 |
| » Gas cylinder trolleys | 36 |

Solved internally, confirmed externally and independently

For DÜPERTHAL, quality is the main focus. Proof of this are the quality marks of approval awarded to each of our safety storage cabinets, in recognition of our comprehensive quality management as per DIN EN ISO 9001. One basic condition here is that, apart from our own in-house checks, production of the safety storage cabinets is continuously monitored by external accredited test institutes.



Occupational safety and health

OSHA / EU-OSHA

Protecting employees and the environment is the highest priority when storing pressurised gas cylinders. Therefore, SUPREME line plus and ECO line plus safety cabinets guarantee compliance with the requirements of OSHA and EU-OSHA.

Tested safety at a very high level including

- » Type testing according to DIN EN 14470-1 by recognised test institutes (TÜV Süd, iBMB Braunschweig, ift Rosenheim).
- » TÜV testing according to DIN EN 14727 (laboratory furniture standard).
- » Type G90 and G30 classification in accordance with DIN EN 14470-1.
- » GS/CE mark.



Safely stored – even in case of fire

The highest safety standards must be applied when it comes to the storage and provision of pressurised gas cylinders. The DÜPERTHAL safety cabinets SUPREME line plus Type G90 and ECO line plus Type G30 offer you certified protection and tested safety – perfectly adapted to your requirements.



Fire resistance of 90 minutes

Depending on the specifics of the gases stored, DÜPERTHAL pressurised gas cylinder cabinets guarantee you fire resistance for 90 or 30 minutes. When the worst comes to the worst, this provides sufficient time for evacuation and a safe time window for fighting the fire in earnest.

Functional and safe

Alongside safety, DÜPERTHAL SUPREME line plus and ECO line plus cabinets also leave nothing to desire in the way of features. In its safety cabinets for pressurised gas cylinders, DÜPERTHAL combines ideal suitability for laboratory needs with maximum fire resistance – naturally tested and approved in compliance with DIN EN 14470-2 and the laboratory furniture standards of DIN EN 14727.

System solutions, tailored to your requirements

DÜPERTHAL offers system solutions for process-optimised storage of chemicals and hazardous substances in scientific research, development and production. Our goal is to accommodate your individual requirements in customised solutions. This is why you can expect not only remarkable certified products, but also outstanding service. Our team will help you to improve your work processes and to integrate our products in the best possible way so as to considerably enhance your safety.



Varied product range

With all our solutions you have a choice between the standard product on the market and highly customised packages with a variety of fitted features. Professional advice and comprehensive service are always guaranteed.

Safety cabinets for pressurised gas cylinders

Pressurised gas cylinders containing toxic, self-igniting, flammable or oxidising gases, are needed in many factories and laboratories. If the gas cylinders leak or if there is a fire, the DÜPERTHAL safety cabinets offer maximum safety for all employees, the fire brigade and the environment. They exceed the current standards, thus qualifying for the storage, provision and handling of pressurised gas cylinders inside buildings and laboratories. With their low energy consumption, the DÜPERTHAL safety cabinets are furthermore environmentally friendly and help achieving seals of approval for Green Buildings and Sustainable Architecture.



Focusing on the people and the environment

The ventilation systems of our SUPREME line plus and ECO line plus safety cabinets protect all users through safe extraction of any escaping gases. Optimised ventilation ducts ensure an efficient flow of air. For all models, the pressure loss values of the ventilation system are significantly below 150 Pa, which means, when planning ventilation facilities, that minimum – and environmentally friendly – pressure values may be assumed. For users, this also means that the cabinet doors can be opened easily and without effort.

DÜPERTHAL – constant reassurance

For the duration of our partnership, you will benefit from DÜPERTHAL's unique service: from project planning and technical product advice to delivery of the product itself, you can always depend on us.



Always at your service

Specialist carrier with checklist

Safety starts with the delivery of the product. Our specialist carrier works according to a detailed checklist and therefore ensures that our products are professionally installed in their final place of use.

Service agreement – the clever option

With a service agreement, we offer you the full service including maintenance and repair of your safety storage cabinets. Additionally, we will extend the manufacturer's guarantee to cover the contract period of the service agreement. The first inspection within the scope of a service agreement is free of charge.



„Through regular maintenance within the scope of a service agreement, we guarantee the safety of your DÜPERTHAL safety storage cabinets for many years.“

Tommy Fittkau, Manager Technical Service,
Quality Management

Eye-catcher or inconspicuous storage?

SUPREME line plus und ECO line plus cabinets are available in a selection of colours to meet your personal tastes, corporate needs or the style of your working environment. The standard colour of the carcass is light grey, (RAL 7035). The wing doors are available in a choice of ruby red (RAL 3003) or light grey (RAL 7035) Apart from the colours depicted below, individual colour preferences can also be fulfilled.



Golden yellow
RAL 1004

Light grey
RAL 7035

Zinc yellow
RAL 1018

Pure white
RAL 9010

Safety and functionality



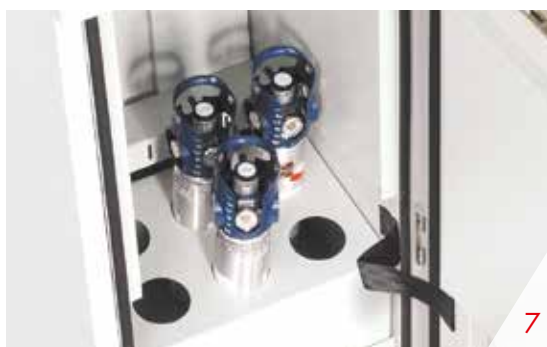
Apart from maximum safety, our series SUPREME line plus und ECO line also offers maximum comfort with its ergonomic construction and perfection down to the smallest detail. Using the sophisticated accessories, you may adjust your safety cabinet individually to your needs

Focus on functionality

- 1 Maximum flexibility through adjustable installation rails as a standard - ideal to read the fittings ergonomically and without reflections. Alternatively, an upright installation is possible.
- 2 The interior height is optimised for the installation and operation of gas cylinder fittings
- 3 The cabinet door may be opened up to an angle of 170 degrees, thus offering the user maximum freedom of use. The opening angle may be adjusted continuously – according to your demands.
- 4 Locations for drilling holes for the connection of pipes or cables are marked on the top and side panels of the cabinet.
- 5 When different gases are used in the same cabinet, purging gas pipes are necessary for a safe operation. Depending on the substances, they may be connected directly to the exhaust air duct.

Further features

- 6** Intermediate shelves and shelves for side installation allow for additional space to store small gas cylinders, thus enabling the operator to use the cabinet volume optimally.
- 7** Cylinder racks provide a secure hold of stored items such as ECOCYL® cylinders.
- 8** The cylinder screw caps may be safely positioned on a shelf.
- 9** Profile half-cylinders for the lock protect against unauthorised access and can be integrated into locking systems.
- 10** Using gas cylinder trolleys, it is easy to equip and store 10 litre gas cylinders.





SUPREME line plus – Type G90

Discover the optimum solution from DÜPERTHAL for the storage of pressurised gas cylinders of all sizes with 90-minute fire resistance. Experience the convenience and flexibility of being able to equip your workplace to meet your precise needs.



SUPREME plus S



SUPREME plus M



SUPREME plus L



SUPREME plus XL



Interior fittings:

- » Two installation rails for mounting gas fittings.
- » One cylinder holder with one retaining belt per standing space.
- » A sturdy roll-in flap.
- » Marked drilling areas for gas pipes and electrical cables.
- » Connection for purging gas pipe as a standard.

Colour:

- » Wing doors in ruby red RAL 3003.
- » Carcass completely in light grey RAL 7035.
- » Individual colours possible.

Construction:

- » Wing doors powder-coated sheet steel.
- » Outer carcass powder-coated sheet steel.
- » Inner carcass made of high-quality decor panels.

Sustainable and reliable

The SUPREME line plus Type G90 models with 90-minute fire resistance offer exceptional levels of safety for the deployment, use and storage of pressurised gas cylinders. Thanks to maximum fire protection compliant with DIN EN 14470-2, they make an optimum contribution to ensuring safety in your working environment. In addition, optimised airflow routing ensures outstanding energy efficiency. The SUPREME line plus models are an excellent choice for your laboratory in terms of both ecology and economy.

» Efficient air flow



Type G90 – for a consistent fire protection concept

The SUPREME line plus safety cabinets for pressurised gas cylinders help you to ensure complete, 90-minute fire resistance in your laboratory. In combination with Type 90 safety cabinets compliant with DIN EN 14470-1, the SUPREME line plus models are the ideal solution for complete fire protection concepts in line with the highest standards.

Ordering information

Tested safety at a very high level including:



DIN EN 14470-2
DIN EN 14727



3.1.1 SUPREME plus S



Details

1 cylinder holder with 2 retaining belts,
2 horizontal installation rails and roll-in flap

Design

Interior fittings sheet steel;

Ref. no.

79-130660-021

Dimensions [in mm]

| | Outer | Inner |
|--------|-------|-------|
| Width | 595 | 430 |
| Depth | 610 | 388 |
| Height | 1415 | 1171 |

Max. storage capacity and dimensions

| Quantity | Volume | Ø in mm |
|----------|-----------|---------|
| 6 | 1.0 liter | 83 |
| 2 | 10 liter | 140 |

Weight [in kg] 256

3.1.2 SUPREME plus M



Details

1 cylinder holder with 2 retaining belts,
2 horizontal installation rails and roll-in flap

Design

Interior fittings sheet steel;

Ref. no.

79-200660-021

Dimensions [in mm]

| | Outer | Inner |
|--------|-------|-------|
| Width | 595 | 430 |
| Depth | 610 | 388 |
| Height | 2070 | 1826 |

Max. storage capacity and dimensions

| Quantity | Volume | Ø in mm |
|----------|----------|---------|
| 1 | 50 liter | 229 |
| 2 | 10 liter | 140 |

Weight [in kg] 348

3.1.3 SUPREME plus L



Details

1 cylinder holder with 3 retaining belts,
2 horizontal installation rails and roll-in flap

Design

Interior fittings sheet steel;

Ref. no.

79-200960-021

Dimensions [in mm]

| | Outer | Inner |
|--------|-------|-------|
| Width | 895 | 730 |
| Depth | 610 | 404 |
| Height | 2070 | 1826 |

Max. storage capacity and dimensions

| Quantity | Volume | Ø in mm |
|----------|----------|---------|
| 2-3 | 50 liter | 229 |
| 4 | 10 liter | 140 |

Weight [in kg] 477

3.1.3 SUPREME plus XL



Details

1 cylinder holder with 4 retaining belts,
2 horizontal installation rails and roll-in flap

Design

Interior fittings sheet steel;

Ref. no.

79-201260-021

Dimensions [in mm]

| | Outer | Inner |
|--------|-------|-------|
| Width | 1195 | 1030 |
| Depth | 610 | 404 |
| Height | 2070 | 1826 |

Max. storage capacity and dimensions

| Quantity | Volume | Ø in mm |
|----------|----------|---------|
| 3 - 4 | 50 Liter | 229 |
| 6 | 10 Liter | 140 |

Weight [in kg] 595

3.1.4 SUPREME plus XXL



Details

1 cylinder holder with 4 retaining belts,
2 horizontal installation rails and roll-in flap

Design

Interior fittings sheet steel;

Ref. no.

79-201460-021

Dimensions [in mm]

| | Outer | Inner |
|--------|-------|-------|
| Width | 1395 | 1230 |
| Depth | 610 | 404 |
| Height | 2070 | 1826 |

Max. storage capacity and dimensions

| Quantity | Volume | Ø in mm |
|----------|----------|---------|
| 4 | 50 liter | 229 |
| 8 | 10 liter | 140 |

Weight [in kg] 680



ECO line plus – Type G30

The ECO line plus – Type G30 models from DÜPERTHAL are the ideal solution for cost-effective storage of pressurised gas cylinders with 30-minute fire resistance. Discover the smart way to increase convenience and flexibility in your custom-designed working environment.



ECO plus M



ECO plus L



ECO plus XL



ECO plus XXL

Interior fittings:

- » Two installation rails for mounting gas fittings.
- » One cylinder holder with one retaining belt per standing space.
- » A sturdy roll-in flap.
- » Marked drilling areas for gas pipes and electrical cables.
- » Connection for purging gas pipe as a standard.

Construction:

- » Wing doors powder-coated sheet steel.
- » Outer carcass powder-coated sheet steel.
- » Inner carcass made of high-quality decor panels.

Colours:

- » Wing doors in ruby red RAL 3003.
- » Carcass completely in light grey RAL 7035.
- » Individual colours possible

Economical and ecological

The ECO line plus Type G30 models with 30-minute fire resistance offer exceptional levels of safety for the deployment, use and storage of pressurised gas cylinders. Their fire resistance of 30 minutes in compliance with DIN EN 14470-2 contributes to the safety of your workplace. In addition, optimised airflow routing ensures outstanding energy efficiency. This makes the ECO line plus models an excellent choice for your laboratory in terms of both ecology and economy.

» Efficient air flow



Type G30 - for reliable fire resistance for 30 minutes

The ECO line plus Type G30 models with 30-minute fire resistance are ideal for the safe storage of pressurised gas cylinders and offer 30 minutes of reliable fire resistance compliant with DIN EN 14470-2 and TRGS 510 requirements. The low energy consumption of the efficient air flow system protects the environment and simultaneously minimises operating costs.

Ordering information

Tested safety at a very high level including:



DIN EN 14470-2
DIN EN 14727



3.2.1 ECO plus M



Details

1 cylinder holder with 2 retaining belts,
2 horizontal installation rails and roll-in flap

Design

Interior fittings sheet steel;

Ref. no.

73-200660-011

Dimensions [in mm]

| | Außen | Innen |
|--------|-------|-------|
| Width | 595 | 500 |
| Depth | 596 | 386 |
| Height | 2070 | 1884 |

Max. storage capacity and dimensions

| Quantity | Volume | Ø in mm |
|----------|----------|---------|
| 1 – 2 | 50 liter | 229 |
| 2 | 10 liter | 140 |

Weight [in kg] 283

3.2.2 ECO plus L



Details

1 cylinder holder with 3 retaining belts,
2 horizontal installation rails and roll-in flap

Design

Interior fittings sheet steel;

Ref. no.

73-200960-011

Dimensions [in mm]

| | Außen | Innen |
|--------|-------|-------|
| Width | 895 | 800 |
| Depth | 596 | 440 |
| Height | 2070 | 1884 |

Max. storage capacity and dimensions

| Quantity | Volume | Ø in mm |
|----------|----------|---------|
| 2 | 50 liter | 229 |
| 4 | 10 liter | 140 |

Weight [in kg] 390

3.2.3 ECO plus XL



Weight [in kg] 462

Details

1 cylinder holder with 4 retaining belts,
2 horizontal installation rails and roll-in flap

Design

Interior fittings sheet steel;

Ref. no.

73-201260-011

Dimensions [in mm]

| | Außen | Innen |
|--------|-------|-------|
| Width | 1195 | 1100 |
| Depth | 596 | 440 |
| Height | 2070 | 1884 |

Max. storage capacity and dimensions

| Quantity | Volume | Ø in mm |
|----------|----------|---------|
| 3 – 4 | 50 liter | 229 |
| 6 | 10 liter | 140 |

3.2.4 ECO plus XXL



Weight [in kg] 560

Details

1 cylinder holder with 4 retaining belts,
2 horizontal installation rails and roll-in flap

Design

Interior fittings sheet steel;

Ref. no.

73-201460-021

Dimensions [in mm]

| | Außen | Innen |
|--------|-------|-------|
| Width | 1395 | 1294 |
| Depth | 596 | 435 |
| Height | 2070 | 1878 |

Max. storage capacity and dimensions

| Quantity | Volume | Ø in mm |
|----------|----------|---------|
| 4 | 50 Liter | 229 |
| 8 | 10 Liter | 140 |

Accessories SUPREME line plus

Choose from the great variety of accessories the best suited items for your laboratory. Create your own individual work environment tailored to your requirements and work processes.



| | SUPREME plus S | SUPREME plus M |
|---|----------------|---|
| Locking systems: | | |
| Handle with profile half-cylinder Aluminium | 73-70000-089 | 73-70000-089 |
| Handle with profile half-cylinder Stainless steel | 73-70000-289 | 73-70000-289 |
| Additional interior fittings: | | |
| Intermediate shelf Sheet steel | 73-80660-122 | 73-80660-122 |
| Shelf for screw caps to be mounted on cylinder holder. Sheet steel | 79-80660-140 | 79-80660-140 |
| Installation rails (2 pcs.) Sheet steel | 79-80660-152 | 79-80660-152 |
| Shelf for side installation incl. cylinder holder Sheet steel | – | 79-70000-119 |
| Cylinder rack for 6, 10, 14, 18 gas cylinders, max. Ø 83 mm Sheet steel | on request | on request |
| Mobile accessories: | | |
| Gas cylinder trolley | | see page 36 |
| Industrial ventilation: | | |
| Exhaust air system or ventilator | | |
| Safety containers | | see page 26 or www.dueperthal.com |
| Absorbers | | |

For further technical details and dimensions, see page 30.



SUPREME plus L

SUPREME plus XL

SUPREME plus XXL

73-70000-089

73-70000-089

73-70000-089

73-70000-289

73-70000-289

73-70000-289

79-80960-122

79-81260-122

79-81460-122

79-80960-140

79-81260-140

79-81460-140

79-80960-152

79-81260-152

79-81460-152

79-70000-119

79-70000-119

79-70000-119

on request

on request

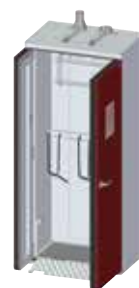
on request

see page 36

see page 26 or www.dueperthal.com

Accessories ECO line plus

Choose from the great variety of accessories the best suited items for your laboratory. Create your own individual work environment tailored to your requirements and work processes.



| | ECO plus M | ECO plus L |
|---|---|--------------|
| Locking systems: | | |
| Handle with profile half-cylinder Aluminium | 73-70000-089 | 73-70000-089 |
| Handle with profile half-cylinder Stainless steel | 73-70000-289 | 73-70000-289 |
| Additional interior fittings: | | |
| Intermediate shelf Sheet steel | 73-80660-122 | 73-80960-122 |
| Shelf for screw caps to be mounted on cylinder holder. Sheet steel | 79-80660-140 | 79-80960-140 |
| Installation rails (2 pcs.) Sheet steel | 73-80660-150 | 73-80960-150 |
| Shelf for side installation incl. cylinder holder Sheet steel | 73-80000-119 | 73-70000-119 |
| Cylinder rack for 6, 10, 14, 18 gas cylinders, max. Ø 83 mm Sheet steel | on request | on request |
| Mobile accessories: | | |
| Gas cylinder trolley | see page 36 | |
| Industrial ventilation: | | |
| Exhaust air system or ventilator | | |
| Safety containers | see page 26 or www.dueperthal.com | |
| Absorbers | | |

For further technical details and dimensions, see page 32.



ECO plus XL

ECO plus XXL

73-70000-089

73-70000-089

73-70000-289

73-70000-289

73-81260-122

73-81460-122

79-81260-140

79-81460-140

73-81260-150

73-81460-152

73-70000-119

73-70000-119

on request

on request

see page 36

see page 26 or www.dueperthal.com

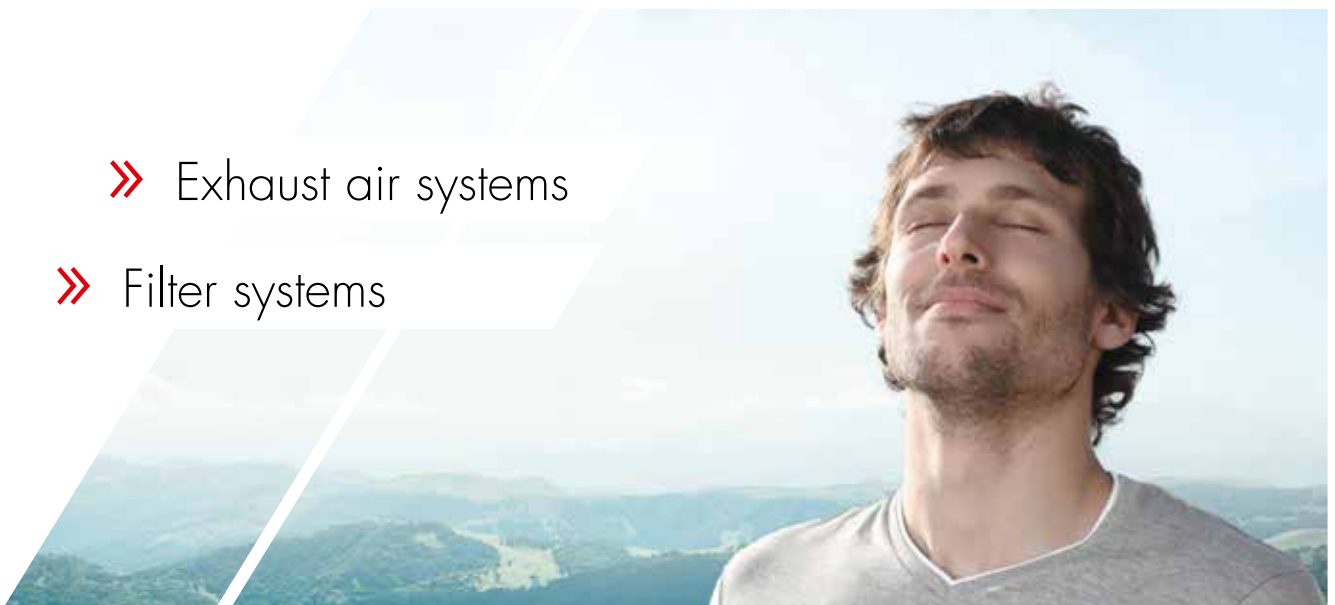
Exhaust air systems and ventilators



To guarantee maximum safety for your employees, connection to exhaust air systems is essential in the case of many chemicals. DÜPERTHAL offers a variety of solutions to stop harmful vapours escaping into the working area. All ventilators and components comply with Directive 94/9/EC (ATEX) and thus meet the highest safety standards.

» Exhaust air systems

» Filter systems



Exhaust air systems



The exhaust air monitor with ventilator is designed for straightforward ventilation and monitoring of safety storage cabinets. A sensor controls the flow of air and emits optical and acoustic alarms if the required value is not reached. The complete exhaust air monitoring unit is pre-assembled on delivery for mounting directly on the cabinet.

Filter systems



Our filter systems are suitable for ventilating and monitoring safety storage cabinets stocked with solvents. They filter almost 100% of any harmful hydrocarbons by means of molecular adsorption, thereby providing users with optimal protection. Additional connection to an exhaust air system is not necessary.

Visit our website for more information on exhaust air systems and other accessories: www.dueperthal.com

More detailed information on the requirements, construction and technical specifications of the ventilation systems we supply for your safety storage cabinets can be found here.



ATEX-compliant
Directive 94/9/EC

⊕ II (3) G c IIB T4

⊕ II (3) G [n4]



Exhaust air monitor with ventilator

Filter unit with ventilator



The many advantages of the DÜPERTHAL exhaust air systems and filter systems

- » ATEX conformity as per Directive 94/9/EC and type certificate from TÜV Süd.
- » Modern "blue mode" LED display with choice of languages: English, French or German.
- » Pre-assembled on delivery for easy installation.
- » Particularly quiet thanks to high-quality finishing.

Safety containers for hazardous liquids

Safety containers not only facilitate handling, but also enhance occupational safety when it comes to managing hazardous substances. DÜPERTHAL safety containers comply with various requirements, such as the test standards for occupational safety, the German Equipment and Product Safety Act (GPSG) and the Technical Rules for Hazardous Substances (TRGS). The wide range of containers cover a multitude of uses, ensuring that hazardous liquids can be handled with confidence. They are made of different materials, such as sheet steel, stainless steel or plastic, and offer maximum media resistance. As a guarantee of safety in the public transportation of hazardous substances, the transport vessels have also been tested in accordance with ADR/RID and IMDG, and in some cases ICAO-TI.



A variety of containers for hazardous liquids

Whether the container is intended for distribution, collection or dispensing, DÜPERTHAL safety containers simplify the process of handling hazardous liquids and thus make an important contribution to occupational safety. Whether you work with acids, lye or flammable materials, these containers leave you completely in control.

Visit our website for more information on safety containers and other accessories: www.dueperthal.com

More detailed information on the requirements, construction and technical specifications of our entire range of safety containers can be found here.



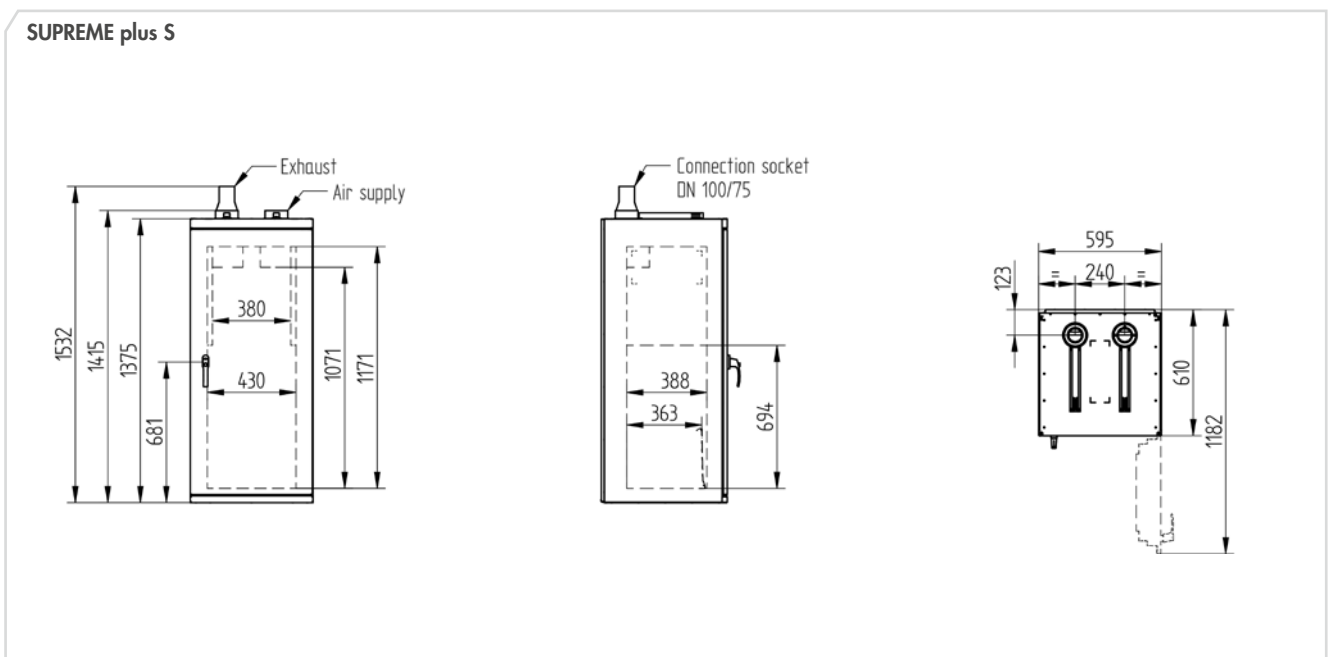
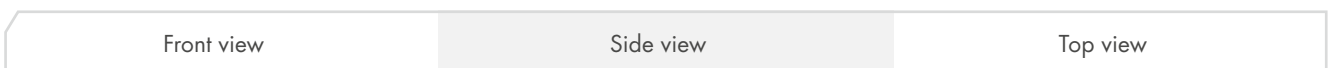
Optimised for safe handling

- » Thoroughly resistant to media.
- » Container labelling as per the German Hazardous Substances Ordinance (GefStoffV) and Workplace Directive A1.3 (ASR).
- » All products have been manufactured to the latest technological standards, technical safety requirements and relevant specifications.

Technical data SUPREME line plus – Type G90

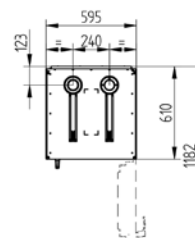
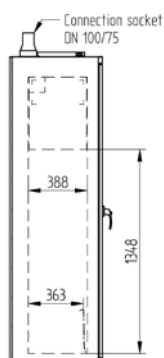
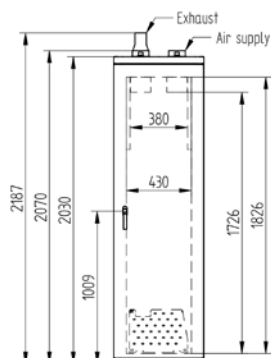
| Technical details | | Model size | | | | |
|---|------------------------------|------------|-------|-------|-------|--------|
| | | S | M | L | XL | XXL |
| Volumetric flow rate for 10-fold air exchange | in approx. m ³ /h | 1,8 | 3,0 | 5,3 | 7,5 | 8,9 |
| Pressure drop in cabinet/pressure loss at exhaust air socket acc. to EK5/AK4 09-10 with 10-fold air exchange | in Pa | <1/<1 | <1/<1 | <1/<1 | <1/<1 | <1/<1 |
| Volumetric flow rate for 120-fold air exchange | in approx. m ³ /h | 21,8 | 35,1 | 63,0 | 89,4 | 107,0 |
| Pressure drop in cabinet/pressure loss at exhaust air socket acc. to EK5/AK4 09-10 with 120-fold air exchange | in Pa | <1/13 | <1/41 | <1/34 | 10/85 | 40/131 |
| Load bearing capacity with uniformly distributed load intermediate shelf/shelf for side installation | in kg | 50/60 | 50/60 | 50/60 | 50/60 | 50/60 |

| Dimensions – interior fittings [in mm] | Model size | | | | | | | | | | | | | | |
|---|------------|-------|--------|-------|-------|--------|-------|-------|--------|-------|-------|--------|-------|-------|--------|
| | S | | | M | | | L | | | XL | | | XXL | | |
| | Width | Depth | Height | Width | Depth | Height | Width | Depth | Height | Width | Depth | Height | Width | Depth | Height |
| Intermediate shelf | 424 | 350 | 35 | 424 | 350 | 35 | 724 | 350 | 35 | 1024 | 350 | 35 | 1224 | 350 | 35 |
| Shelf for side installation incl. cylinder holder | – | – | – | 220 | 347 | 220 | 220 | 347 | 220 | 220 | 347 | 220 | 220 | 347 | 220 |

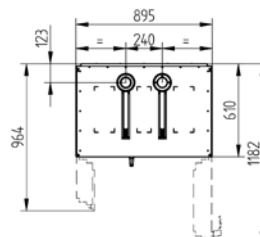
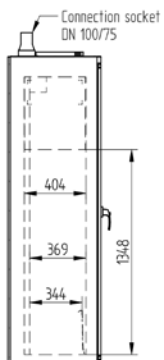
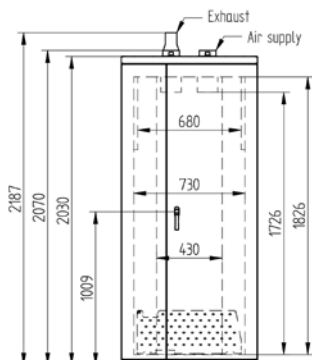


| | | |
|------------|-----------|----------|
| Front view | Side view | Top view |
|------------|-----------|----------|

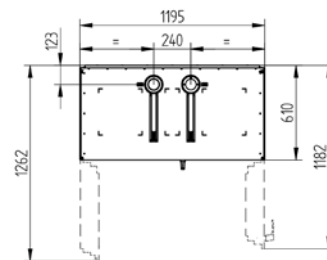
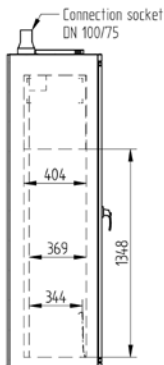
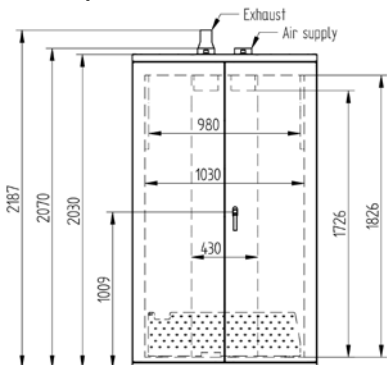
SUPREME plus M



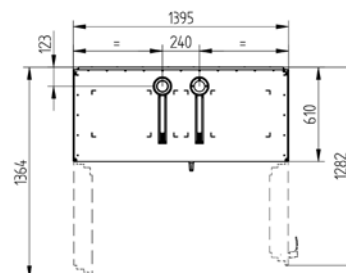
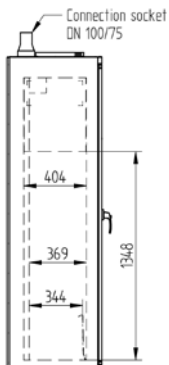
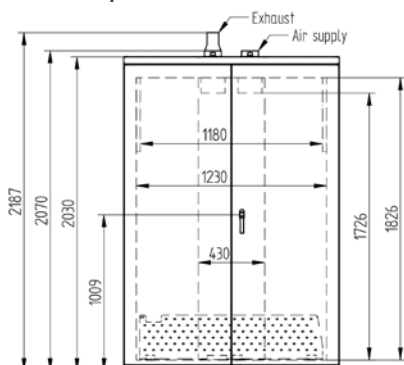
SUPREME plus L



SUPREME plus XL



SUPREME plus XXL



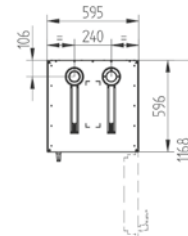
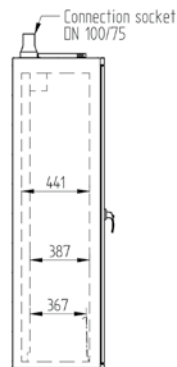
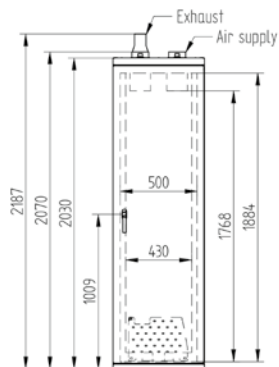
Technical data ECO line plus – Type G30

| Technical details | | Model size | | | |
|---|------------------------------|------------|---------|----------|----------|
| | | M | L | XL | XXL |
| Volumetric flow rate for 10-fold air exchange | in approx. m ³ /h | 4,1 | 6,6 | 8,9 | 10,5 |
| Pressure drop in cabinet/pressure loss at exhaust air socket acc. to EK5/AK4 09-10 with 10-fold air exchange | in Pa | <1/<1 | <1/<1 | <1/<1 | <1/<1 |
| Volumetric flow rate for 120-fold air exchange | in approx. m ³ /h | 49,5 | 79,4 | 107 | 126,5 |
| Pressure drop in cabinet/pressure loss at exhaust air socket acc. to EK5/AK4 09-10 with 120-fold air exchange | in Pa | <150/27 | <150/69 | <150/147 | <150/220 |
| Load bearing capacity with uniformly distributed load intermediate shelf/shelf for side installation | in kg | 50/60 | 50/60 | 50/60 | 50/60 |

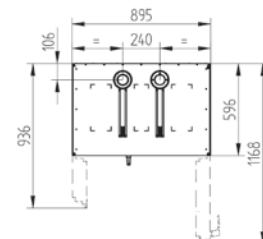
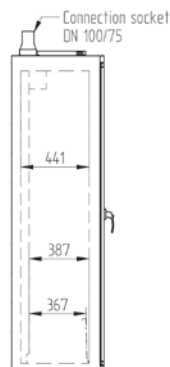
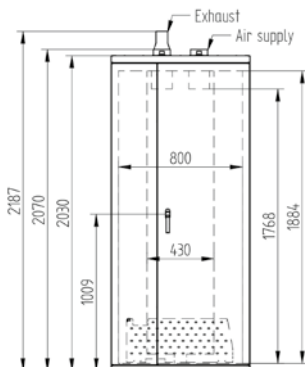
| Dimensions – interior fittings [in mm] | Model size | | | | | | | | | | | |
|---|------------|-------|--------|-------|-------|--------|-------|-------|--------|-------|-------|--------|
| | M | | | L | | | XL | | | XXL | | |
| | Width | Depth | Height | Width | Depth | Height | Width | Depth | Height | Width | Depth | Height |
| Intermediate shelf | 424 | 350 | 35 | 724 | 350 | 35 | 1024 | 350 | 35 | 1224 | 350 | 35 |
| Shelf for side installation incl. cylinder holder | 220 | 347 | 220 | 220 | 347 | 220 | 220 | 347 | 220 | 220 | 347 | 220 |

| | | |
|------------|-----------|----------|
| Front view | Side view | Top view |
|------------|-----------|----------|

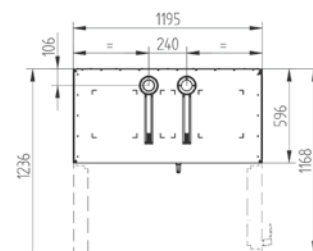
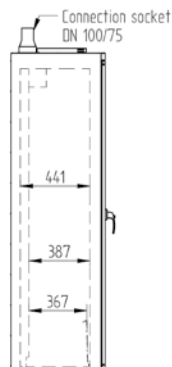
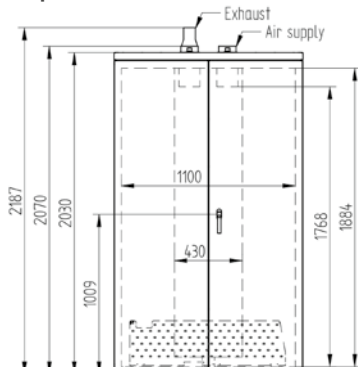
ECO plus M



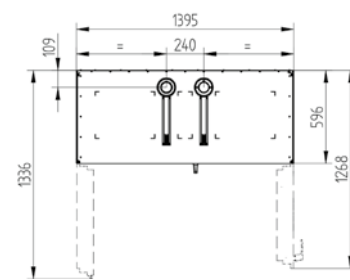
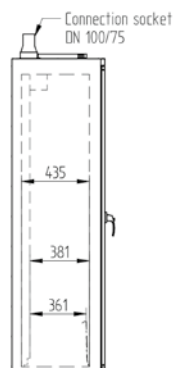
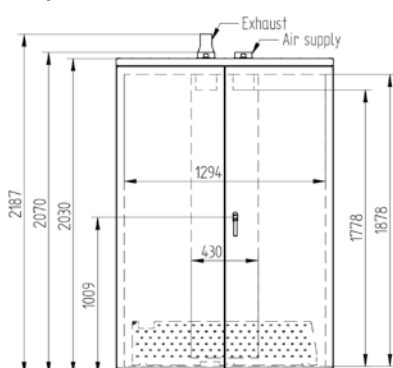
ECO plus L



ECO plus XL



ECO plus XXL



Gas cylinder depots

3.3.1 Gas cylinder depots



Details

For storing gas cylinders outdoors in accordance with the regulations.

- » No safety distance around the gas cylinder depot necessary.
- » Polyester powder coating RAL 9002 grey white on galvanised base material.
- » Good corrosion resistance.
- » 3-point locking system with door handle with security cylinder lock at an ergonomically favourable height.
- » Earthing possibility on the depot roof.
- » Chequer plate floor 3.0 mm, including corrugation 4.5 mm.
- » For each cylinder standing space, there are 2 penetrations in the roof, each Ø 22 mm, for 13.5 PG fittings (closed with plastic plugs).
- » 2 horizontal installation rails for mounting fittings.
- » One cylinder holder with one retaining belt per standing space.
- » Prepared for ground fixing.
- » Natural ventilation in accordance with TRGS
- » Marked with warning symbol W19.

Design [material thickness 1.5 mm]

Gas cylinder depots with or without inspection window optional gas cylinder trolley, see page 36.



Intermediate shelf



Side shelf – 70-90040-115



Red-Box – 2.233.04

Ordering information/Technical data/Dimensions [in mm]

| Model | Inspection-window* | Places for 50 l cylinders | Width | Depth | Height | Depth incl. overhang | No. of Doors | Weight [in kg] | Load bearing capacity** | Ref. no. |
|-------------------------|--------------------|---------------------------|-------|-------|--------|----------------------|--------------|----------------|-------------------------|---------------|
| Gas cylinder depot M 1 | – | 2 | 650 | 400 | 2050 | 500 | 1 | 85 | | 70-200740-001 |
| Gas cylinder depot M 2 | • | 2 | 650 | 400 | 2050 | 500 | 1 | 85 | | 70-200740-003 |
| Gas cylinder depot L 1 | – | 3 | 950 | 400 | 2050 | 500 | 2 | 103 | | 70-201040-001 |
| Gas cylinder depot L 2 | • | 3 | 950 | 400 | 2050 | 500 | 2 | 103 | | 70-201040-003 |
| Gas cylinder depot XL 1 | – | 4 | 1250 | 400 | 2050 | 500 | 2 | 125 | | 70-201340-001 |
| Gas cylinder depot XL 2 | • | 4 | 1250 | 400 | 2050 | 500 | 2 | 125 | | 70-201340-003 |

Accessories

| | | | | | | | | | |
|--|------|-----|--|--|--|--|--|-----|--------------|
| Intermediate shelf for models M 1, M 2 | 610 | 320 | | | | | | 150 | 70-90740-114 |
| Intermediate shelf for models L 1, L 2 | 910 | 320 | | | | | | 150 | 70-91040-114 |
| Intermediate shelf for models XL 1, XL 2 | 1210 | 320 | | | | | | 150 | 70-91340-114 |
| Side shelf with U-profile for all models | 340 | 320 | | | | | | 40 | 70-90040-114 |
| Red-Box | | | | | | | | | 2.233.04 |

*one inspection window per wing door | ** max. load bearing capacity with uniformly distributed load

3.4.1 Gas cylinder containers



Details

For storing gas cylinders outdoors in accordance with the regulations.

Stable frame construction - surface hot-dip galvanised according to EN ISO 1461.

- » Lockable wing gate.
- » Construction according to TRGS 510.
- » Prepared for ground fixing.
- » Modular system with assembly instructions for self-assembly.

Design

Gas cylinder container with or without roof



Holding devices – 2x 7.80.198* with chain



Gas cylinder rack – 2x 7.80.199* individually or two on top of each other



Gas cylinder container – 7.80.128* with roof and double wing gate – 7.80.328*

Ordering information/Technical data/Dimensions [in mm]

Gas cylinder container without roof

| Max. number of gas cylinders | Width | Depth | Height | Ref.no |
|------------------------------|-------|-------|--------|-----------|
| 32 x Ø 220mm | 2100 | 1085 | 2060 | 7.80.218* |
| 48 x Ø 220mm | 2100 | 1500 | 2060 | 7.80.224* |
| 60 x Ø 220mm | 2400 | 1500 | 2060 | 7.80.228* |
| 78 x Ø 220mm | 3100 | 1500 | 2060 | 7.80.236* |
| 104 x Ø 220mm | 3100 | 2100 | 2060 | 7.80.254* |

Gas cylinder container with roof

| | | | | |
|---------------|------|------|------|-----------|
| 32 x Ø 220mm | 2100 | 1085 | 2180 | 7.80.118* |
| 48 x Ø 220mm | 2100 | 1500 | 2180 | 7.80.124* |
| 60 x Ø 220mm | 2400 | 1500 | 2180 | 7.80.128* |
| 78 x Ø 220mm | 3100 | 1500 | 2180 | 7.80.136* |
| 104 x Ø 220mm | 3100 | 2100 | 2180 | 7.80.154* |

Accessories

| | |
|------------------|-----------|
| Double wing door | 7.80.318* |
| | 7.80.324* |
| | 7.80.328* |
| | 7.80.336* |
| | 7.80.354* |

| | |
|--------------------------------|----------------|
| Holding devices ¹ | 7.80.198* |
| Gas cylinder rack ² | 7.80.199* |
| Gas cylinder trolleys | see page 36/37 |

¹ for gas cylinders Ø 220mm
² W 1300 x D 1000 x H 850

Gas cylinder boxes / pallets

3.4.2 Gas cylinder boxes



Details

For storing gas cylinders outdoors in accordance with the regulations TRGS.

- » Galvanised sheet steel.
- » Optionally available as a closed construction or with natural ventilation through perforated doors and side panel.
- » Including intermediate shelf.
- » Cylinder lock as standard fitting.
- » Disassembled upon delivery – easy to assemble.

Dimensions [in mm]

| | Width | Depth | Height |
|---------|-------|-------|--------|
| 1 Door | 840 | 690 | 1475 |
| 2 Doors | 1680 | 690 | 1475 |

Design

Ref. no.

| | perforated | closed |
|---------|------------|----------|
| 1 Door | 790.100* | 790.200* |
| 2 Doors | 790.150* | 790.250* |

Accessories

Gas cylinder trolleys
see page 36

3.5.1 Gas cylinder pallets



Details

For the safe, economic and effortless transport of 1 to 8 gas cylinders – surface hot-dip galvanised according to EN ISO 1461.

- » Sturdy base frame with forklift pockets
- » Inner dimensions of forklift pockets: 170 x 70 mm (W x H), inner distance between the pockets 510 mm.
- » Gas cylinders can be secured individually with chains.
- » Lateral tilt limiter.
- » With hooks for hoses and screw caps

Load bearing capacity

Dimensions [in mm]

| | Width | Depth | Height |
|--------|-------|-------|--------|
| 350 kg | 840 | 690 | 1475 |
| 700 kg | 1680 | 690 | 1475 |

Ref. no.

Max. number of gas cylinders

| | | | |
|--------|----------|--------|--------------|
| 350 kg | 700.800* | 350 kg | 4 x Ø 250 mm |
| 700 kg | 700.810* | 700 kg | 8 x Ø 250 mm |

3.6.1 Gas cylinder trolley for 50 litre gas cylinders



Details

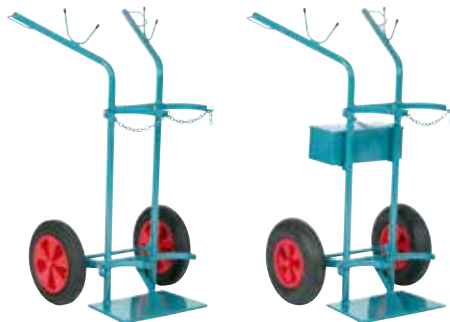
For the safe transport of a gas cylinder. Blue painted steel tube construction with solid rubber tyres.

- » Sturdy design.
- » Easy handling
- » Including securing chain.
- » Red PVC handle for safe grip

Ref. no.

7.00.600

3.6.2 Gas cylinder trolleys for 40/50 litre gas cylinders



Details

For the safe transport of gas cylinders. Blue painted steel tube construction. Available with airfilled tyres or solid rubber tyres.

- › Sturdy design.
- › Easy handling.
- › Including securing chain.
- › Finger guards for safe grip.
- › Hose support on the handle bars.
- › Optionally with lockable toolbox.

Design

Ref. no.

Max. number of gas cylinders

| Design | Ref. no. | | Max. number of gas cylinders | |
|--------------------|--------------|-----------------|------------------------------|--------------|
| | with Toolbox | without Toolbox | solid rubber | air-filled |
| Tyres solid rubber | 7.00.630 | 7.00.620 | 2 x 50 liter | 2 x 50 liter |
| Tyres air-filled | 7.00.635 | 7.00.625 | | |

3.6.3 Gas cylinder trolleys for 10 litre gas cylinders



Details

For the safe transport of small gas cylinders. Steel tube construction in slate grey with solid rubber tyres. Perfect for equipping gas cylinder cabinets such as SUPREME line plus; ECO line plus and depots.

- › Sturdy design.
- › Optimal radius of movement.
- › Easy handling.
- › Including securing belt.
- › Optionally with tool box including suitable wrench for gas cylinder caps.

Design

Ref. no.

Max. number of gas cylinders

| Design | Ref. no. | | Max. number of gas cylinders |
|--------------------|--------------|-----------------|------------------------------|
| | with Toolbox | without Toolbox | solid rubber |
| Tyres solid rubber | 7.00.618 | 7.00.616 | 1 x 10 liter |
| | 7.00.617 | 7.00.615 | 2 x 10 liter |

Gas cylinder trolleys

3.6.4 Gas cylinder trolleys for propane gas cylinders



Details

For the safe transport of propane gas cylinders. Blue painted steel tube construction. Available with air-filled tyres or solid rubber tyres.

- » Sturdy design and easy handling.
- » Including securing chain.
- » Finger guards and red PVC handle for safe grip in models 7.01.010 and 7.01.015, respectively.

| Design | Ref. no. | |
|-------------------------------------|--------------|--------------|
| Max. number of gas cylinders | 1 x 11 liter | 1 x 33 liter |
| Tyres solid rubber | 7.01.000 | 7.01.010 |
| Tyres air-filled | 7.01.005 | 7.01.015 |

3.6.5 Gas cylinder trolleys for 20 litre gas cylinders



Details

For the safe transport of gas cylinders. Blue painted steel tube construction. Available with air-filled tyres or solid rubber tyres.

- » Sturdy design and easy handling.
- » Including securing chain.
- » Red PVC handle for safe grip.

| Design | Ref. no. | |
|-------------------------------------|--------------|--------------|
| Max. number of gas cylinders | 2 x 20 liter | 2 x 20 liter |
| Tyres solid rubber | 7.01.020 | – |
| Tyres air-filled | – | 7.01.025 |

3.6.6 Gas cylinder trolleys with tail wheel for 40/50 litre gas cylinders



Details

For the safe transport of gas cylinders. Blue painted steel tube construction. With fold-out tail wheel. Available with air-filled tyres or solid rubber tyres.

- » Optionally with lockable toolbox including hose and torch holder and two welding rod holders.
- » Finger guards for safe grip.

| Design | Ref. no. | | Max. number of gas cylinders | |
|--------------------|--------------|-----------------|------------------------------|--------------|
| | with Toolbox | without Toolbox | Solid rubber | Air-filled |
| Tyres solid rubber | 7.01.035 | 7.01.030 | 2 x 50 liter | 2 x 50 liter |
| Tyres air-filled | 7.01.045 | 7.01.040 | | |

Intelligent technology – Great service

There is more to safety than simply buying a safety storage cabinet. This is why we offer you our certified knowledge, comprehensive service and expertise – supporting you before, during and especially after your decision to buy a DÜPERTHAL safety storage cabinet. For a reassuring feeling of having done everything within your power.

Individual advice.
Intelligent solutions.
Safety requires experts.

Your contact person – for Germany

Phone: +49 6188 9139-0
E-mail: vkid@dueperthal.com

Your contact person – for all other countries

Phone: +49 6188 9139-150
E-mail: export@dueperthal.com

Preventive inspections.
Sustainable maintenance.
Our service sets new standards.

Your contact person – Technical Service

Phone: +49 6188 9139-166
E-mail: service@dueperthal.com



Safety means responsibility.

DÜPERTHAL is one of the leading manufacturers of safety storage cabinets. There are good reasons for choosing DÜPERTHAL safety technology. Find out more about us and our entire product range on www.dueperthal.com.

We look forward to your call!

Mondays to Thursdays from 8.00 am to 5.00 pm
Fridays from 8.00 am to 4.00 pm

DÜPERTHAL Sicherheitstechnik GmbH & Co. KG
Frankenstrasse 3 | 63791 Karlstein | Germany



DÜPERTHAL Sicherheitstechnik GmbH & Co. KG
Frankenstrasse 3 | 63791 Karlstein | Germany
Phone +49 6188 9139-0 | Fax +49 6188 9139-121
info@dueperthal.com | www.dueperthal.com